



# FBC

LONDON

MONUMENTAL





*Opposite page:* VESTA modular sofa and AURORA coffee table in high gloss oak with bronze finish.

## CONTEMPORARY CRAFTSMANSHIP MEETS SUBLIME MATERIALITY

Texture, colour and contrasting juxtaposition of nature and materiality all combine in the timeless world of FBC London. This is our signature style.

Our handcrafted indoor and outdoor contemporary furniture collections can be mixed and matched in endless combinations while enlivening every space with their distinctive individuality. Every piece is designed and crafted to still hold a presence in 100 years' time and our hope is that they will be enjoyed by generations to come.

Textured finishes and materiality define our luxury contemporary furniture, including coffee tables and modern sofas, to bedside tables and dining sets - all handcrafted for city, country, beach, ski and yacht living.

Reflecting our commitment to craft in the modern age, our bespoke furniture, lighting and



kitchens are manufactured in British workshops by multi-generational artisans selected for their time-honoured techniques, and impeccable craftsmanship. Nothing is without the FBC London touch.

Our signature bronze cast badge is synonymous with British craftsmanship. We apply it to every piece of our bespoke furniture as a testament to every pair of hands it passes through. From the process of imagination in our design studio, to the traditional and innovative techniques used by our exceptional British artisans and makers. From our world to yours, each piece elevates any room with a timeless presence.





Still under a decade young, we are fortunate to now have showrooms in both London and New York, and we have sent furniture to many countries across the world. I feel so proud to have created furniture that appeals to many cultures and nationalities...there are no boundaries.

I founded FBC London out of a passion to create unique pieces of furniture, using the ever changing textures, colours and patterns that nature provides combined with my life journey and experiences. Places I have been, buildings and things I have seen are a main source of inspiration and influence. Each of our pieces are individual and have a story of their own. You can feel the quality, time and creativity that has been invested in each and every piece.

We take time to select the most talented and conscientious artisans to carefully craft our designs into reality. Using a combination of traditional and modern manufacturing methods seamlessly joined to create these pieces of art. We like to think of them as antiques of the future. Timeless in their design, expertly hand crafted in their construction and distinctive in their finishes.

We are also proud to have all of our furniture manufactured exclusively in the United Kingdom and Europe. Conscious of the environment we aim to use sustainable materials and reduce our carbon footprint where possible.

With the New Year on the horizon we look forward to launching our very first outdoor and lighting collections.

*This page:* MONTIS chair,  
NY chest of drawers and  
ASPECTU mirror.







“With an obsessive focus on craft and innovation, we’re reframing traditional practices through contemporary designs. To produce the bronze cast base of our Hadrian Console, we collaborated with third generation metalsmith artisans in Northumberland that normally produce 6ft steel parts for war ships. It’s these collaborations that make each collection a journey of craft and passion.”

FIONA BARRATT-CAMPBELL





*Above:* Making bronze casts at our Foundry in Edinburgh.



*This page:* Artisans developing our 'Cracked Earth' finish', craftsmanship of the St Barths base, sculpting metalwork in Somerset.

# REVIVING BRITISH CRAFT

Through craftsmanship-inspired designs, FBC London is redefining contemporary furniture as handmade and finely crafted.

A sense of community and local identity is more important than ever before, and through our collections, we explore national identity as an inspiration; intensely connected to reviving and evolving British craft and techniques.

Central to our vision of being a Great British brand and celebrating artisanal expertise, our creativity and designs support a diverse range of heritage crafts, from woodworking, glass blowing, metalsmithing and textiles. To this, we bring innovation through the selection of materials and textured artisanal finishes – all meticulously applied by artists hands.

Our recognisable 'textural and sensory' craftsmanship is forged through collaborations with family-run, independent and socially responsible British

artisanal workshops. Often, there are multiple workshops involved in crafting a single collection.

Adorning every piece of furniture is our signature FBC London bronze cast badge. This marque is a testament to every pair of hands it passes through, referencing the British craftsmanship revealed in every joint, curve, angle and meticulous detail.

Seeing our ideas come to fruition is exciting. The consistent evolution of creativity and design at FBC London often ignites a deeper conversation with clients to create entirely bespoke pieces or include a level of personalisation. From finishes and timbers, to custom fabrics, personalised motifs and fully bespoke kitchens – the possibilities are endless.







“ Our recognisable **textural and sensory** craftsmanship is forged through collaborations with family run, independent and socially responsible British artisanal workshops. Often, there are multiple workshops involved in crafting a single collection.”

FIONA BARRATT-CAMPBELL





# BYETHORNE COLLECTION

One of our most coveted collections characterised by our textured and signature Silky Oak finish.

**CABINET**  
The smooth rippling waves of our signature Silky Oak finish is available in natural or mid brown with brass base and handles.



“All interiors, sides and back of the cased goods in the Byethorne range are finely finished with an exquisite oak veneer and handcrafted in our Northumberland workshop.”

Craft and the human hand combine to achieve the layered refinement of colour and warmth, using a unique whitewashed finish to accentuate the smooth rippling waves of the Silky Oak natural veneers. Our full range of bedroom furniture, coffee table, cabinet, bookcase and media unit – all feature solid antiqued brass base and handles to add a luxurious metallic contrast.



**BED**  
The legs and the edge detail of the headboard take inspiration from the elegant and simplistic form of the Byethorne handle timber legs.



**SIDE TABLE**  
Our signature Silky Oak finish combines natural timber with antiqued brass base and handles to add metallic contrast.



**MEDIA UNIT**  
Brass strips bring an industrial chic to the delicate and soft style of the white-washed Silky Oak finish; available in bespoke sizes.



**BOOKCASE**  
This piece is characterised by warm tones and materiality with the striking brass set off beautiful against the Silky Oak timber.



**COFFEE TABLE**  
Our signature Silky Oak finish features on this beautiful coffee table, available as an oval or round table with three brass legs.



**CREDENZA**  
Inspired by the Byethorne cabinet, the internal design features an adjustable shelf in each of the three compartments.



# ARMCHAIRS

Our statement armchairs enhance any room and work perfectly when paired with other pieces from our collection.



ARMOUR

Using 3,000-year-old techniques, the intricate base is inspired by Ancient Roman jewellery and contrast with a sculpted seat.



MONTIS

Inspired by Mount Etna and the raw power of nature with high contrast polished rich copper fins and internal oxidised finish.



ANGELINA

Designed to embrace smooth and fluid lines, evoking an understated elegance. The detailed cast bronze foot adds contrast.



EDESIA SLIPPER CHAIR

The smooth curves of the metal frame wrap around the back to hold the beautifully upholstered seat beneath and backrest.





CORBRIDGE

Solid and yet elegant and curved, this armchair is an oversized statement piece ready to envelope one in its comfort.



SOL

Designed as a modern interpretation of the traditional club chair with a formed bronze, aluminium or timber frame.



FREDERICK

Designed and upholstered in rich materials, enhanced with brass detailing and a chocolate oak base, featuring beautiful arches.



HELIOS

Named after the God of the Sun, the brass arms mirror the shape of the sun's rays; choice of lacquered wood legs available.



“ I wanted to create an armchair that enveloped you like a giant hug. The beauty of this Corbridge piece is held in the complexity of its form. Curved on every facet and every plain, including the bronze base. Over 200 hours to sculpture the frame by hand and upholster. ”

FIONA BARRATT-CAMPBELL

*This page:* RAIN credenza featured with our CORBRIDGE armchair and OSWALD side table in mid brown oak and bronze finish.



# CHAISES



ANTIBES CHAISE

Inspired by the relaxed elegance of the South of France. The Antibes is a refined yet inviting luxury chaise, beautifully upholstered and complete with a head rest.





*This page:* BYETHORNE bed, CITY bedside table, AURORA console in 'Cracked Earth' and bronze finish with GRACE BENCH.

# BEDS

Characterised by enduring beauty, our handcrafted beds are available in a range of sizes up to UK and USA King Size.



GEORGIANA

Our clean-lined four-poster bed is accented with an elegant solid oak frame and upholstered headboard a statement addition to any bedroom.



BYETHORNE

The legs and the edge detail of the headboard take their inspiration from the elegant and simplistic form of the Byethorne collection handles.



JUNO

Inspired by the ancient Roman Goddess of marriage, the Juno bed is delicately crafted with an upholstered wing-back headboard and contemporary framework.



CHEYNE

Featuring an upholstered body with a chocolate brown oak base, the Cheyne Bed is traditionally hand upholstered and features an enveloping headboard.



# BEDSIDE TABLES

From geometric forms to sensual curves and exquisite materiality, our range of bedside tables bring impact to any bedroom.



ST BARTHS

As breathtaking as its namesake, soft curves form the base evoking smooth waves and undulating sands.



AZTEC

The geometric structure creates a juxtaposition between mid-century modern and ancient Aztec creative philosophies.





BRIDGE

Inspired by the two bridges that link Newcastle and London together. Beautifully structured with a concealed feature drawer.



GLACIAL

The textured materiality of ultra-clear glass reflects ice in a glacier with contrasting sleek form and slim bronze legs.



RAIN

Echoing falling rain, our new 3D texture is available in Ombré Bronze and Verdigris Bronze; complemented by matt oak veneer.



NY

Simplistic in form and luxurious in materiality, the shape is inspired by the New York skyline and its monolithic skyscrapers.



BYETHORNE

Our signature Silky Oak finish combines lime washed natural timber with antiqued brass to add textured contrast.



ADA

Ada is derived from the ancient Greek name Adalheidis. The lightly textured metal frame provides the stability and strength whilst maintaining a slender elegant appearance.



CITY

Inspired by the reflections in the windows of London's skyscrapers, each white oak chip is hand applied, making each piece unique.



GEM

The perfect piece for creating a serene atmosphere, crafted with the crystal Selenite, known for its calming qualities.



# CABINETS & BOOKCASES



BYETHORNE CABINET

The rippling waves of our signature Silky Oak finish is available in natural or mid brown tones with brass base and handles.



CHESTER BOOKCASE

Tonal wood sits seamlessly alongside the bronze base and back plate as linear geometry and organic shapes are combined.



BYETHORNE BOOKCASE

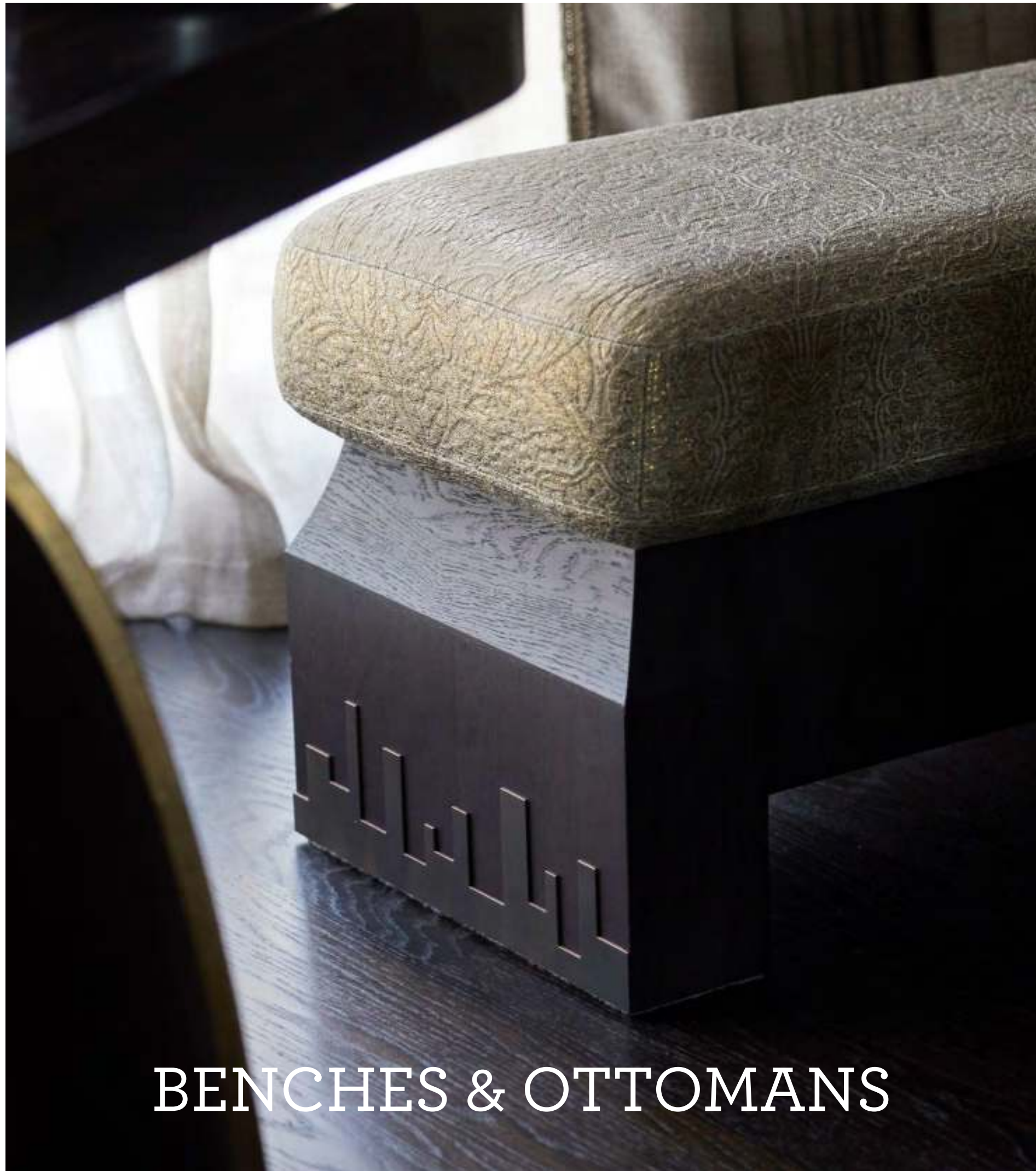
This piece is characterised by warm tones and materiality with the striking brass set off beautiful against the Silky Oak timber.



CITY CABINET

The City range takes inspiration from London's skyscrapers that are reflected in the windows of different buildings around the city and is embodied in the design of the City range.





# BENCHES & OTTOMANS



TERES

Elegant lines and contrasting materials, the refined oak base is integrated into brass patina feet with a tailored upholstered seat.



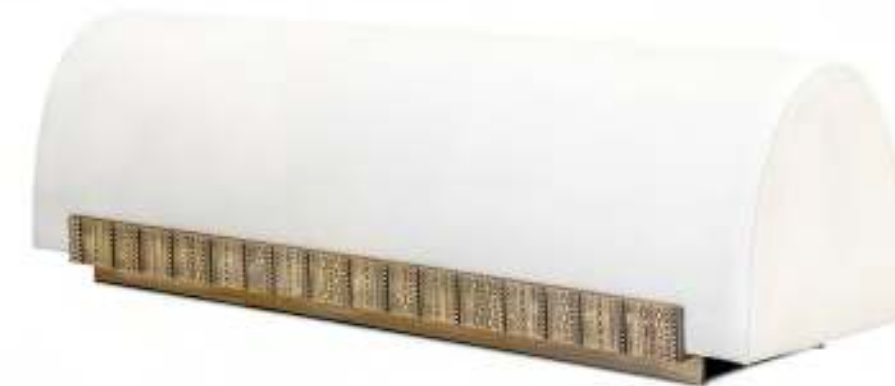
FLORENCE

A handcrafted silhouette of the ancient city's skyline adorns the strong timber base with a plush upholstered top.



CHELSEA

Minimalist design featuring comfortable upholstery and a textured strap detail that creates a striking contrast with the oak base.



GRACE

Understated elegance exudes from the fluid lines and simplistic rounded upholstery form set off with a detailed cast bronze base.



# COFFEE TABLES

Designed to be a centrepiece, every coffee table is handcrafted and characterised by FBC London's house style of contrasting texture and materiality.



AURORA OVAL

Our Aurora collection is characterised by a striking segmented top, strong geometric base and our 'Cracked Earth' finish.



AURORA SQUARE

The Aurora coffee table was the very first piece created by FBC London setting the tone for the brand's textured and timeless feel.



AURORA RECTANGLE

One of our most coveted pieces, available in a choice of antiqued bronze, pewter or gold bronze as well as high gloss oak.



COLUMN

Inspired by the columns from Roman and Greek temples, featuring a geometric pattern of large rivets in bronze or brass.



OSWALD

A juxtaposition between the curve of the cast bronze legs and the strong geometry from the brass detailing set within the timber top.





SOL

An expansion of the Sol range, designed as a modern classic built around strong geometric lines with handcrafted hammered finish.



BAMBURGH

Inspired by an abstract handcrafted outline of Bamburgh Castle in Northumberland, built in 420 AD.



LAPIS

Every table bears a unique 'Lapis' stone. The mysterious 'Kenya Black' marble has a unique, exceptional composition.



BYETHORNE

Our signature Silky Oak finish features on this beautiful coffee table, available as an oval or round table with three brass legs.



# CONSOLES

From elegant lines to uniquely formed bases and specialist finishes, our console tables make a distinctly individual statement for any room.



BRIDGE

An extension of its bedside table counterpart, the Bridge Console boasts the same, streamlined design.



ADA CONSOLE

The lightly textured metal frame provides the stability and strength whilst maintaining a slender elegant appearance.



AURORA

The 'Cracked Earth' finish is available in bronze, pewter, gold or high gloss walnut and strikingly set off with the strong geometric base.



BYETHORNE

A heavily textured with a silky oak top, complete with elegantly streamlined brass base.



PIMLICO

A statement piece with imposing, geometric legs constructed from solid oak and finished with a marble top feature.





COLUMN

The Column range is available in bronze or brass finish and contrast textured materials for the top in either polished marble or glass.



HOUSESTEADS

The Housesteads console takes inspiration from the ancient Roman Fort, Housesteads, the remains of which can be found along Hadrian's Wall in Northumberland.



HADRIAN

Inspired by ancient Roman armour, the curvature of the base is designed to create a striking contrast with the linear form of the wall.



ROME

Constructed from exquisite Calcutta Viola marble and featuring a simple bronze patina trim to the two bases.



# CREDENZAS & CHEST OF DRAWERS



RAIN CREDENZA

The Rain texture is a new addition to our furniture collection. The heavily textured finish is complimented by a smooth matt oak veneer and a bronze finished metal base.



RAIN CHEST OF DRAWERS

The Rain texture is a new addition to our furniture collection. A 3D texture that embodies falling Rain, it is available in Ombré Bronze and Verdigris Bronze.



NY CHEST OF DRAWERS

The NY range takes its name from the New York skyline. High gloss oak contrasted with matt finished American burr walnut fronts and the hand finished bronze patina base.



NY CREDENZA

The NY range takes its name from the New York skyline which is monopolised by these monolithic skyscrapers. The shape is simplistic in its form, yet luxurious in its materiality.





CITY CHEST OF DRAWERS

The City range takes inspiration from London's skyscrapers that are reflected in the windows of different buildings around the city and is embodied in the design.



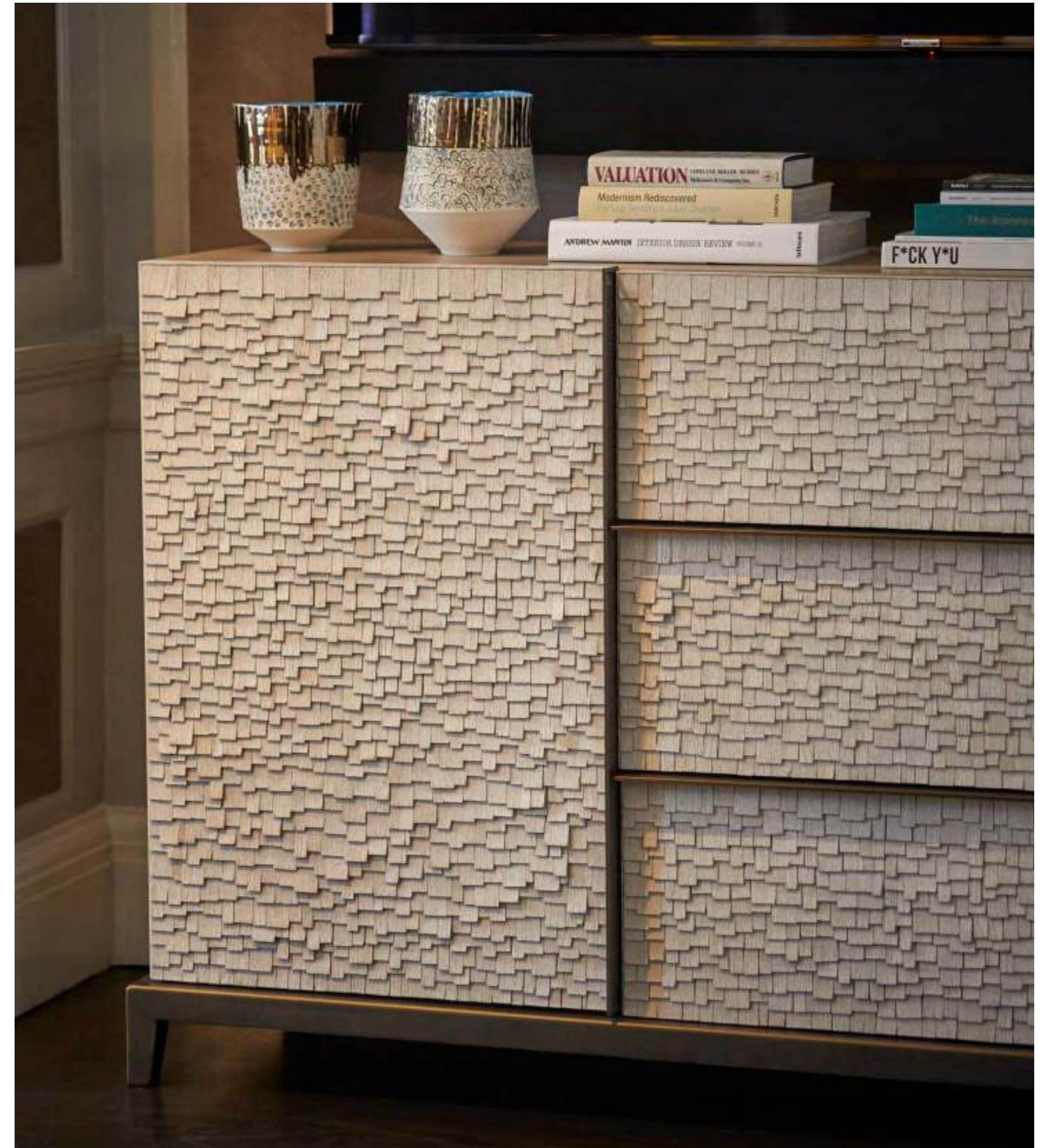
CITY CREDENZA

Each cabinet is made entirely unique, featuring layers of white or chocolate oak pieces applied by the artist's own hand.



BYETHORNE CREDENZA

Inspired by the Byethorne Cabinet and featuring the same Silky Oak finish. The internal design features an adjustable shelf each of the three compartments.





# DESKS

The perfect balance of beauty and functionality. Enhance your home office with a stylish desk.



BRIDGE

Structural geometry and contrasting materiality are distinctive features of our Bridge Collection, seen here with our smooth high gloss walnut finish.



MILAN

The solid oak top and frame conceals a cable tidy, socket tray and leather lined pencil tray with brass detailing evoking the city's skyline.



MINERVA

Reminiscent of a dissected bell, the high gloss top is contrast with cast bronze legs. The underside features a secret drawer pull.



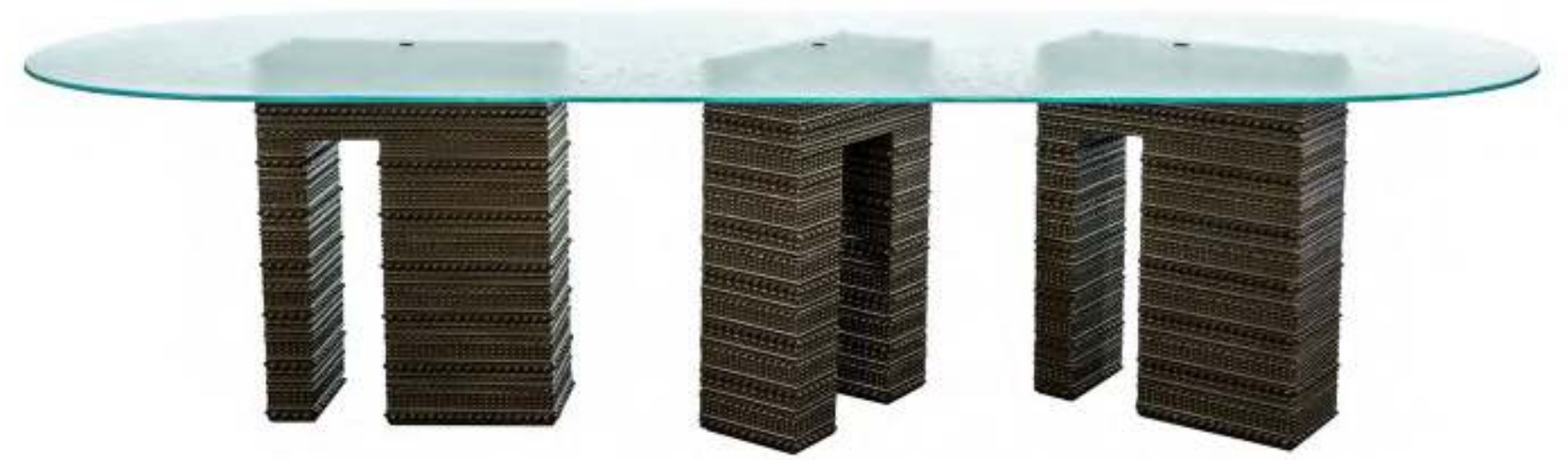
# DINING TABLES

Pieces for a lifetime and the focal point for making memories at every dinner party with family and friends.



HORIZON

Evoking the endless rising and setting sun on the horizon, slim lines and smooth table top reflect the sun's daily routine.



FORTIS

A statement piece of strength and structure, distinguished by the bronze Armour pattern work and squoval glass top; available as oval or rectangle.



AURORA

Using the trilateral base of the Aurora coffee table, the wide timber top is endowed with a soft linear multi-directional design and brass detailing.



BYETHORNE

A heavily textured with a silky oak top, complete with elegantly streamlined brass base.



COLUMN

Strong geometric lines, industrial scale large rivets and sublime materiality, available in bronze or brass finish with marble or textured glass.



LAWRENCE

Taking its inspiration from industrial aesthetics, the laser cut base is available in brass, bronze or brushed aluminium and handcrafted wood top.





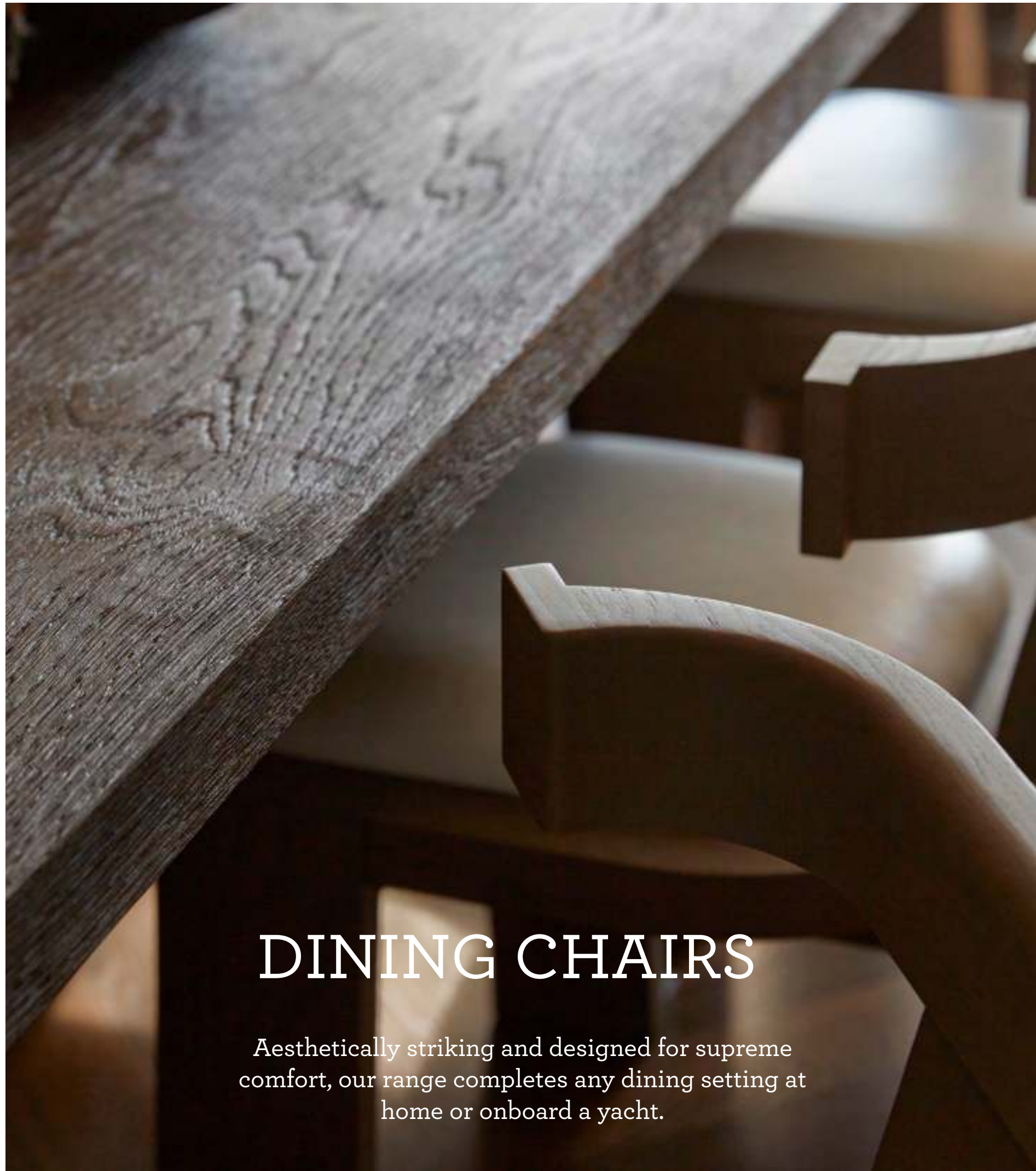
*This page:* FORTIS dining table with texture glass top,  
styled with EDESIA dining chairs



“These chairs are sculptural and delicate in design. The contoured form of the frame is taken from the silhouette of a woman.”

FIONA BARRATT-CAMPBELL





# DINING CHAIRS

Aesthetically striking and designed for supreme comfort, our range completes any dining setting at home or onboard a yacht.



FIONA CARVER

Elegant and classic in shape, the enveloping arms encourage relaxation and comfort combined with the structured frame.



FIONA SIDE CHAIR

The graceful curves of the chair backs are all crafted by hand in fawn stained oak, mid brown oak or chocolate oak.



BYETHORNE





EDESIA KITCHEN & BAR STOOLS

Sculptural and delicate in their design with additional armrests, the contoured form is taken from the silhouette of a woman.



EDESIA SIDE CHAIR

The curves of the metal frame and beautifully upholstered seat are inspired by the Roman goddess of feasting and grand banquets.



EDESIA ARMCHAIR

Sculptural and delicate in their design with additional armrests, the contoured form is taken from the silhouette of a woman.



“The luxury of smooth, highly reflective gloss wood veneer is juxtaposed with the detailed cast bronze detail on the reverse of the chair.”



LUCA

Our distinct Armour bronze pattern work on the back of the seat contrasts with the highly defined gloss oak legs and upholstery.



LAVA

The textured metal frame is reminiscent of molten rock that oozes from the earth forming soft folding ripples with elegant upholstery.





# MEDIA UNITS

Contemporary style and functionality combined. Our TV and tech storage is available in completely bespoke sizes.



CITY

The City range takes inspiration from London's skyscrapers that are reflected in the windows of different buildings around the city and is embodied in the design.



ARMOUR

A statement piece for any space, the central panel features an intricate bronze patternwork that is moulded and applied by hand.



RAIN

The rain texture is a new addition to our furniture collection. The heavily textured finish is complimented by a smooth matt oak veneer and a bronze finished metal base.



BYETHORNE

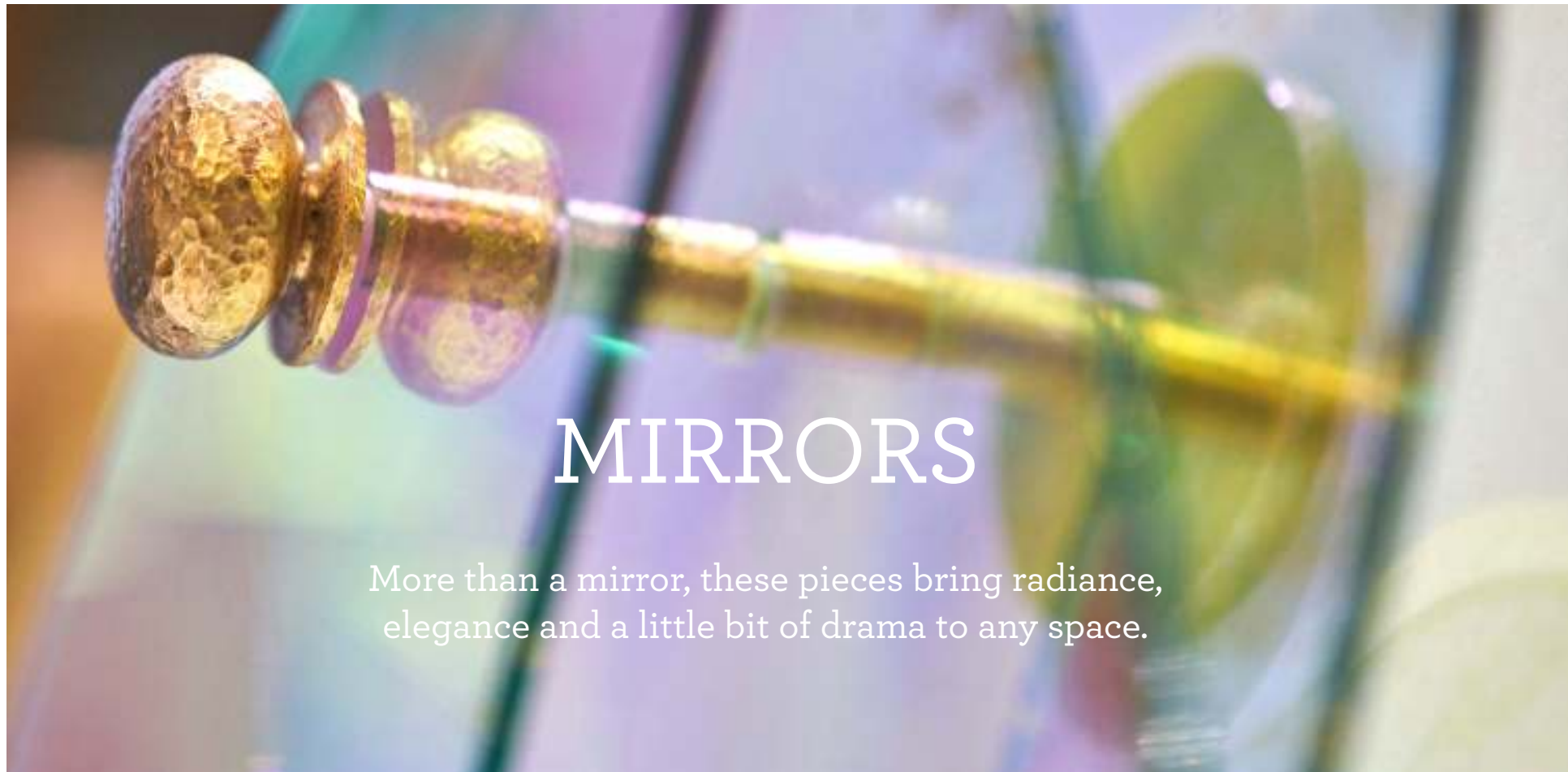
Brass strips bring an industrial chic to the delicate and soft style of the white-washed Silky Oak finish; available in bespoke sizes.



CLASSIC

Epitome of classic modern design, this media unit is available in customer's choice of fabric with a brass header and footer.





# MIRRORS

More than a mirror, these pieces bring radiance, elegance and a little bit of drama to any space.



PARIS

Antiqued mirror is encased in upholstered suede for this stylish folding screen, perfect for any bedroom or dressing room.



VITRIUM

The antiqued effect of the mirror adds allure to any space, softening the reflection and complemented by an brass frame.



ASPECTU

Ethereal beauty is brought to life through layers of semi-reflective mirror with gold-leaf and brutalised with a bronze planished rod.



BYETHORNE

Our signature Silky Oak finish of the Byethorne Collection can now adorn your walls with our oval and rectangular mirror.







## SIDE TABLES

Handcrafted side and occasional tables that work perfectly as individual pieces or when paired with other items from our collections.



### COLUMN COLLECTION

Inspired by Greek and Roman temples with industrial rivets, bases available in bronze or brass and glass or marble top.





OSWALD

A juxtaposition between the curve of the cast bronze legs and the geometry from the brass detailing set within the timber top.



AURORA

Developed from the original Aurora Coffee Table. Featuring the Cracked Earth, one of our specialist finishes.



EVOLUTION

Inspired by the detail on the shell of the Giant Tortoises found in the Seychelles. For indoor and outdoor use.



SOLIS

Made from the naturalistic study of prehistoric rocks, using the finest sourced onyx and unique brass hand etched panel.



BRIDGE

Inspired by the two bridges that link Newcastle and London together. Beautifully structured with a skyline detailed on the base.



BYETHORNE

Moulded from an original handcarved design and available in pewter, bronze or white grey in small or large sizes.



ROMAN I & II

Moulded from an original handcarved design and available in pewter, bronze or white grey in small or large sizes.



SOLIS

Made from the naturalistic study of prehistoric rocks, using the finest sourced onyx and unique brass hand etched panel.



# SOFAS

The epitome of contemporary design with striking details and handcrafted comfort to last a lifetime.



LONDON SOFA  
Soft sleek lines, curvaceous arms and a deep seat create the perfect mix between a luxurious aesthetic design and comfort.







SOL

With a formed bronze, aluminium or timber frame, the strong geometric lines and main upholstered body has been made to maximise the comfort.



VESTA

The inspiration drawn from the roman goddess of hearth and home. The clean lines of the upholstery compliment the horizontal lines of the lucite and brass material mixed base. Varying sizes and corner sections allows the design to be customisable to fit.



PAX

Inspired by Pax the Roman Goddess of Peace. The design has been considered to provide complete comfort and relaxation. The Pax has been thoughtfully created with a soft back and a generous seat depth.



MOLUS

A sectional sofa allowing you to customise your configuration. It has elegantly angled arms and a unique base. The legs are a unique composition of bronze linear uprights in the centre which are then contrasted by the lightness of the Lucite legs at either end.



# LIGHTING

Antiqued brass, white onyx and handblown glass in sculptural forms are combined to create our bespoke lighting fixtures.



## PENDANT

The Byethorne lighting range is our first lighting collection and draws on the beautiful clean lines of the Byethorne handle detail that this collection is known for.







PENDANT

The simplistic metal form is accentuated with elegant metal detailing, contrasted with a combination of white onyx, handcrafted or bubbled glass.







BYETHORNE SCONCE

Our elegant wall sconce is available in tarnished silver, bronze or antiqued brass finish with white onyx and a choice of bubbled clear or bronze glass.







# BESPOKE

All our pieces can be tailor made to bespoke sizes and finishes.



Housesteads Dining Table



Housesteads Console Table





Byethorne Bedside



Bedside Table



Banburgh Bench



Luna Bedside Table



Lawrence Pedesta



Grace Bench



Aurora Bridge Side Table



Rain Credenza Prive City Cabinet



City Cabinet



Prive City Cabinet





City Media Unit



City Bedside Table



Byethorne winged Credenza



City Wine Cabinet



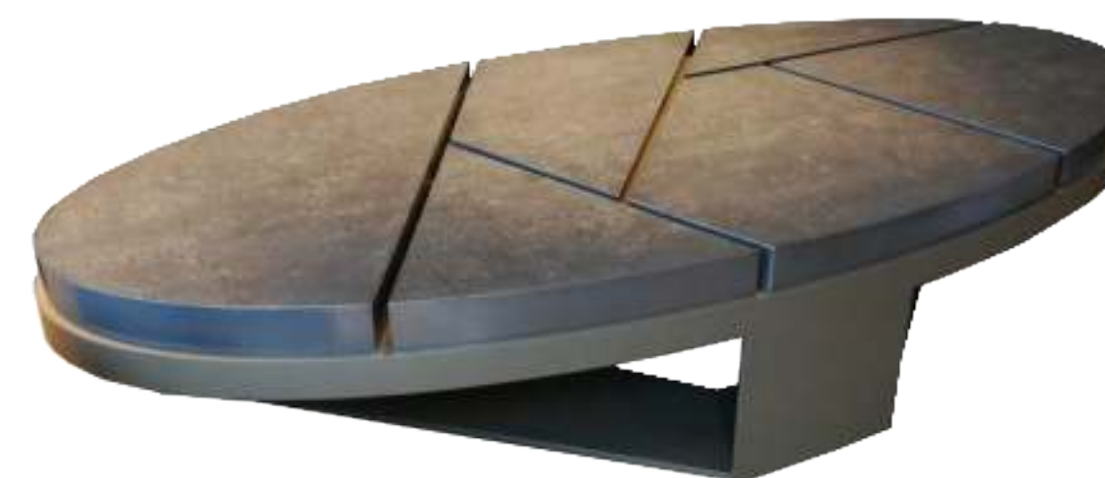
Aztec Side Table



Aztec Side Table



Grace Bench



Aurora Coffee Table





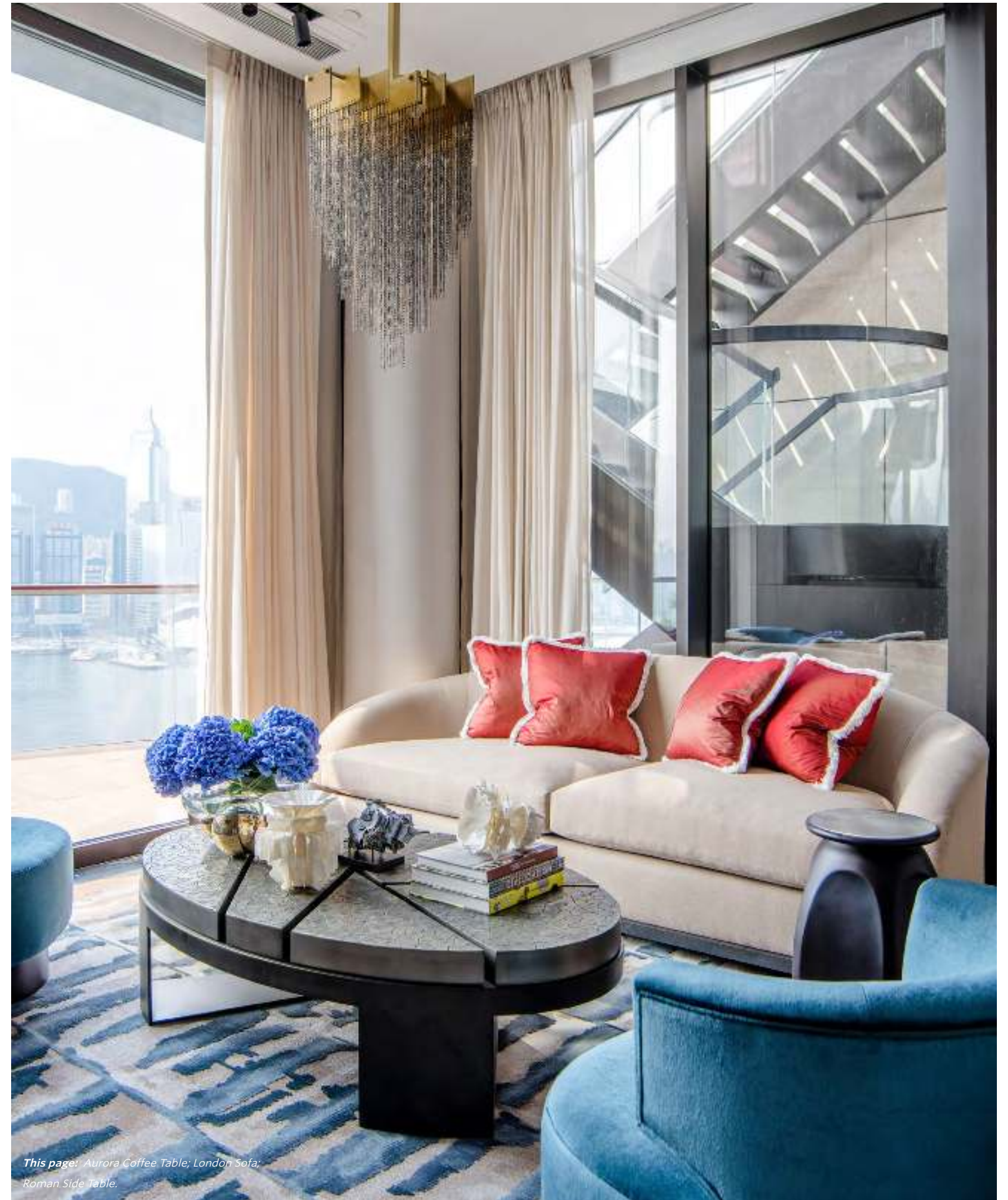
*This page: Angelina Lounge Chair; Aspectu Mirror;  
Byethorne Chandelier; London Sofa; Byethorne Coffee Table.*

*This page: Evolution Side Table; Helios Armchair;  
Lapis Coffee Table; Vesta Sofa.*





*This page: Aurora Coffee Table;  
Roman Side Table; Montis Armchair*



*This page: Aurora Coffee Table; London Sofa;  
Roman Side Table.*





*This page: Milan Desk.*



*This page: Evolution Side Table; Helios Armchair; Lapis Coffee Table; Vesta Sofa.*





*This page: Fiona Dining Chair,  
Rain Credenza; Pimlico Console.*



*This page: Byethorne Coffee Table;  
Lava Chair; NY Chest of Drawers.*





*This page: Edesia Dining Chair, Vesta Sofa, Sol Armchair, Roman Side Table, Montis Armchair.*



*This page: Evolution Side Table, Sol Armchair, Roman Side Table, Montis Armchair.*



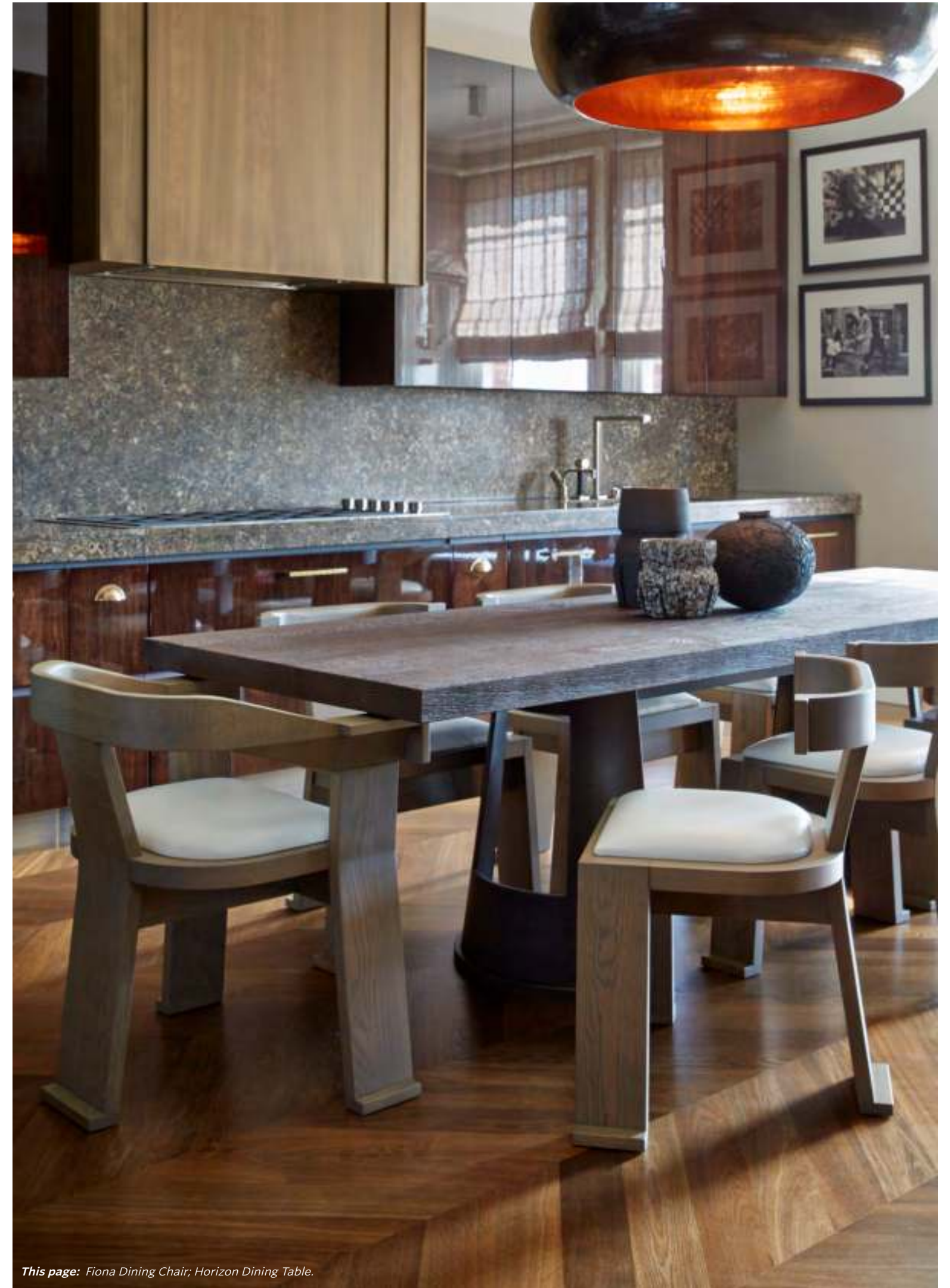


*This page: London Sofa, Aurora Coffee Table,  
Sol Armchair, Florence Stool.*



*This page: Housestead Console.*





*This page: Minerva Desk; Milan Desk.*

*This page: Fiona Dining Chair; Horizon Dining Table.*



Main image : FORTIS dining table with squoval glass top, styled with LAVA dining chairs.





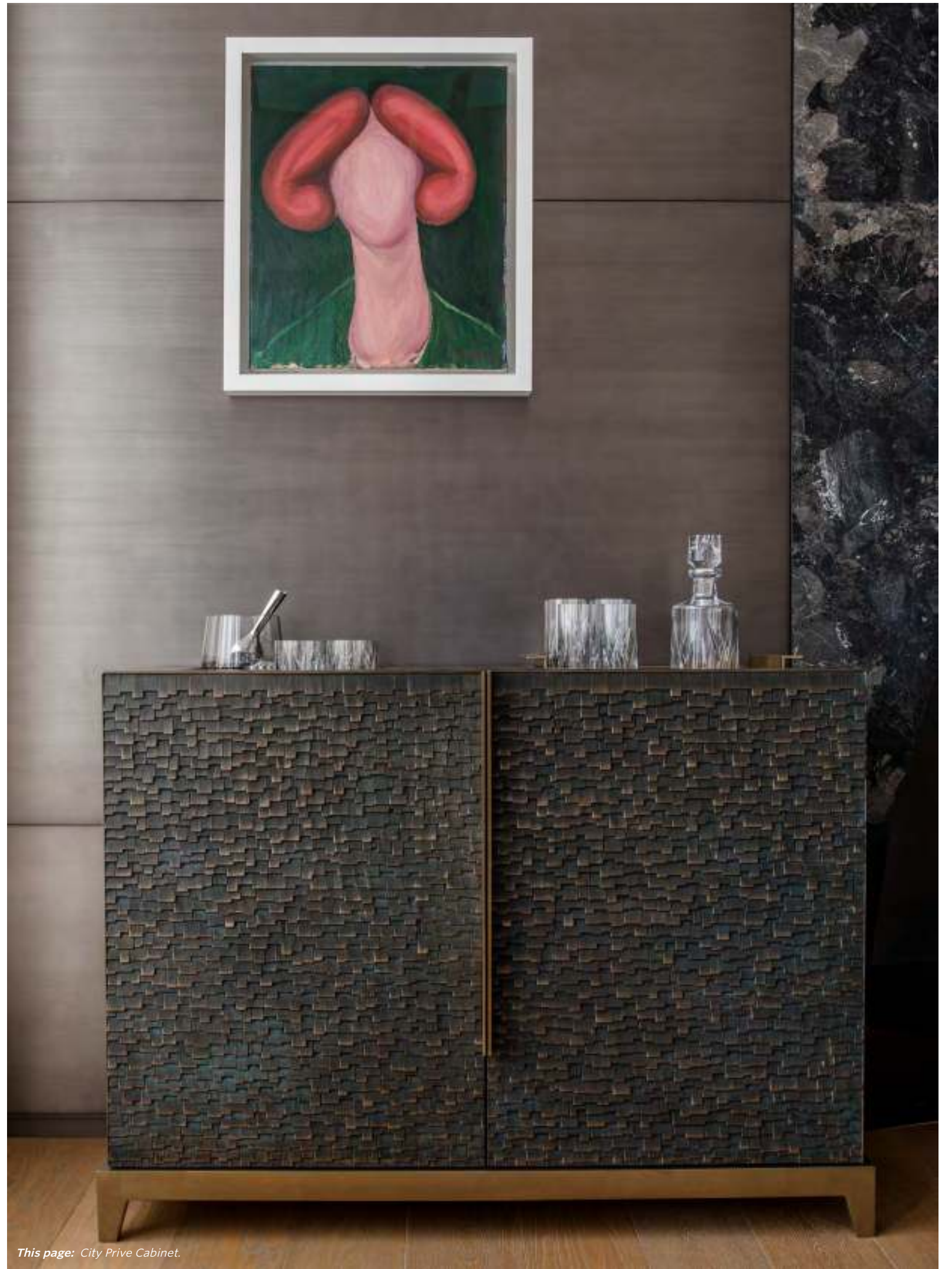


*This page: Fiona Side Chair and Lawrence Dining Table.*



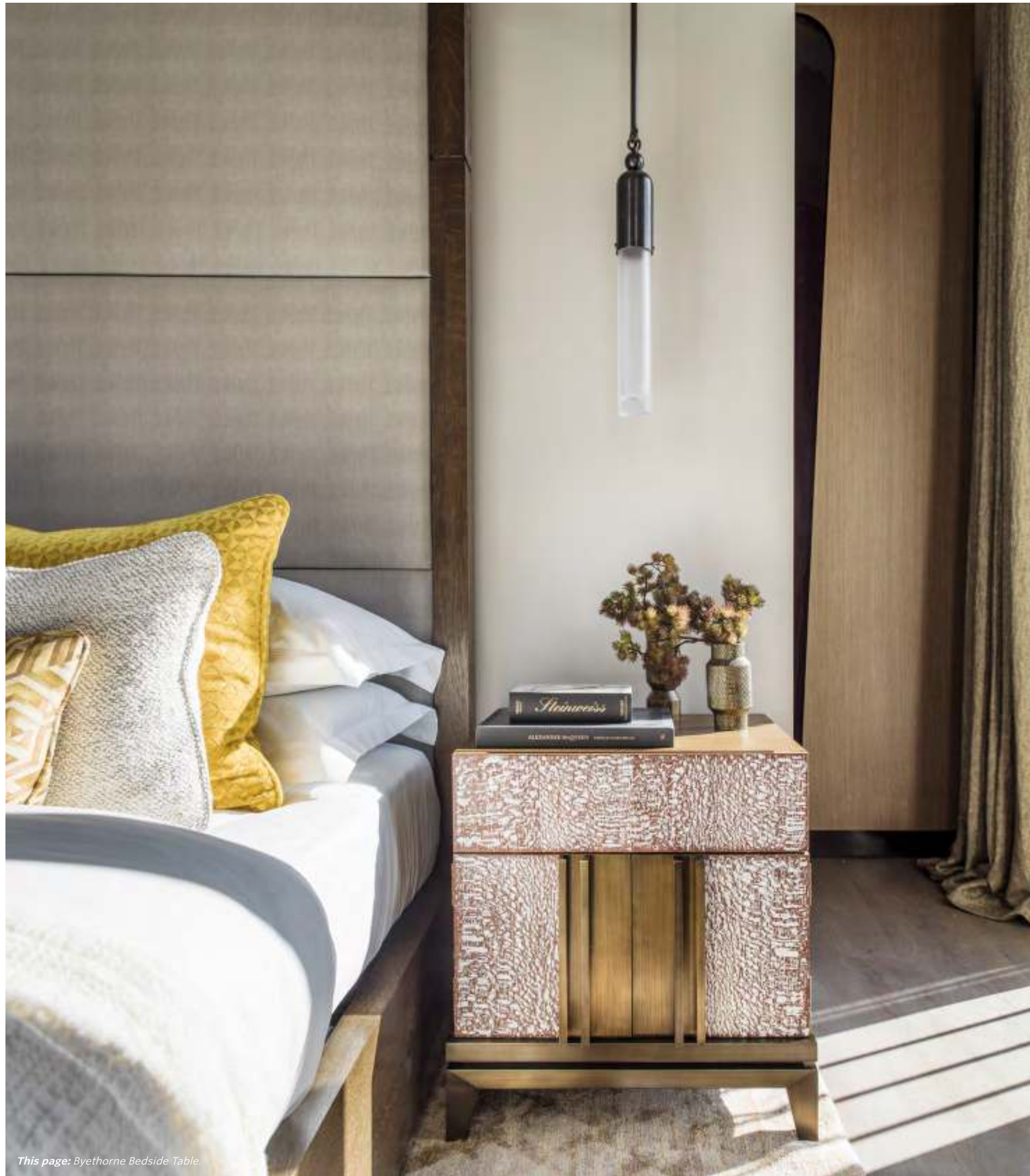


*This page: Fiona Side Chair; Horizon Dining Table.*



*This page: City Prive Cabinet.*





*This page: Byethorne Bedside Table.*



*This page: City Chest of Drawers, Georgiana Bed.*





*This page: Bridge Side Table; Juno Bed; Antibes Lounge.*







*This page: Georgiana Bed;  
City Bedside Table.*



*This page: Roman Side Table; Grace Bench;  
Byethorne Bed; Gem Bedside Table.*







*This page: City Bedside Table; Juno Bed; Classic Media Unit.*





# CONTACT OUR SHOWROOMS

Located in the heart of London's Pimlico design district and New York's design centre 200 LEX

## LONDON

66 Pimlico Road  
Belgravia, London. SW1W 8LS  
+44 (0) 207 730 9555  
info@fbc-london.com

## NEW YORK

Showroom Suite 401  
200 Lexington Avenue, New York, NY 10016  
+1 646.820.7886  
info.usa@fbc-london.com

*This page: Montis Armchair; Evolution Side Table.*





**FBC**  
LONDON

Collections of handcrafted indoor and outdoor furniture, bespoke, kitchens, lighting, wallcovering and interior accessories created for the world's finest homes, hotels and superyachts.

[FBC-LONDON.COM](http://FBC-LONDON.COM)